



Est: Aug. 1998



2(F) & 12(B): Oct 2010

Shri. Shivaji Shikshan Prasarak, Mandal's

SHIVAJI COLLEGE, HINGOLI

Kothlaj Road, Hingoli.- 431513 Phone No. (02456) 222015, 290332

Affiliated to Swami Ramanand Teerth Marathwada University, Nanded.

E-mail Id- shivaji232.hnl@gmail.com Website- www.shivajicollegehingoli.org

Shri. Vasantao Pawar
Secretary

Dr. B.G. Gaikwad
Principal
(M.Com. M. Phil. Ph.D)

E-Waste Management Policy for Shivaji College, Hingoli

Introduction:

Shivaji College, Hingoli, is committed to sustainable environmental practices and responsible management of electronic waste (e-waste). As the use of electronic devices and equipment becomes integral to the college's operations, the effective management of e-waste is crucial to minimizing environmental impact and promoting sustainability. This policy outlines the procedures for the responsible disposal, recycling, and management of e-waste generated by the college.

Objectives:

- To ensure Responsible Disposal: Implement procedures for the safe disposal of e-waste in compliance with environmental regulations.
- To promote Recycling: Facilitate the recycling of electronic components and materials to reduce landfill waste.
- To minimize E-Waste Generation: Adopt practices and policies that minimize the generation of e-waste within the college.
- To educate and Train: Provide training and awareness programs on e-waste management for staff and students.
- To monitor and Report: Regularly monitor e-waste management practices and report on the effectiveness of the policy.

Policy Details

Responsible Disposal Procedures:

- Collection and Segregation: E-waste, including old computers, printers, and other electronic devices, should be collected and segregated into designated bins to prevent contamination with general waste.


Principal
Shivaji College, Hingoli
Tq. Dist. Hingoli (MS)



- **Authorized Disposal Services:** The college will partner with certified e-waste disposal vendors to ensure that all electronic waste is disposed of in accordance with legal and environmental standards.
- **Documentation:** Maintain records of e-waste collection, disposal, and recycling activities to ensure accountability and compliance.

Promotion of Recycling:

- **Recycling Programs:** Implement recycling programs for components such as batteries, circuit boards, and other recyclable materials found in electronic devices.
- **Partnerships:** Collaborate with e-waste recycling organizations to ensure that materials are processed and recycled efficiently.

Minimization of E-Waste Generation:

- **Procurement Policies:** Adopt procurement policies that prioritize the purchase of energy-efficient and recyclable electronic equipment.
- **Maintenance and Repair:** Promote regular maintenance and repair of electronic devices to extend their lifecycle and reduce the need for replacements.

Education and Training:

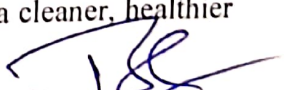
- **Awareness Campaigns:** Conduct awareness campaigns to educate staff and students about the importance of e-waste management and proper disposal practices.
- **Training Programs:** Provide training sessions for staff responsible for managing e-waste, ensuring they are knowledgeable about handling and disposal procedures.

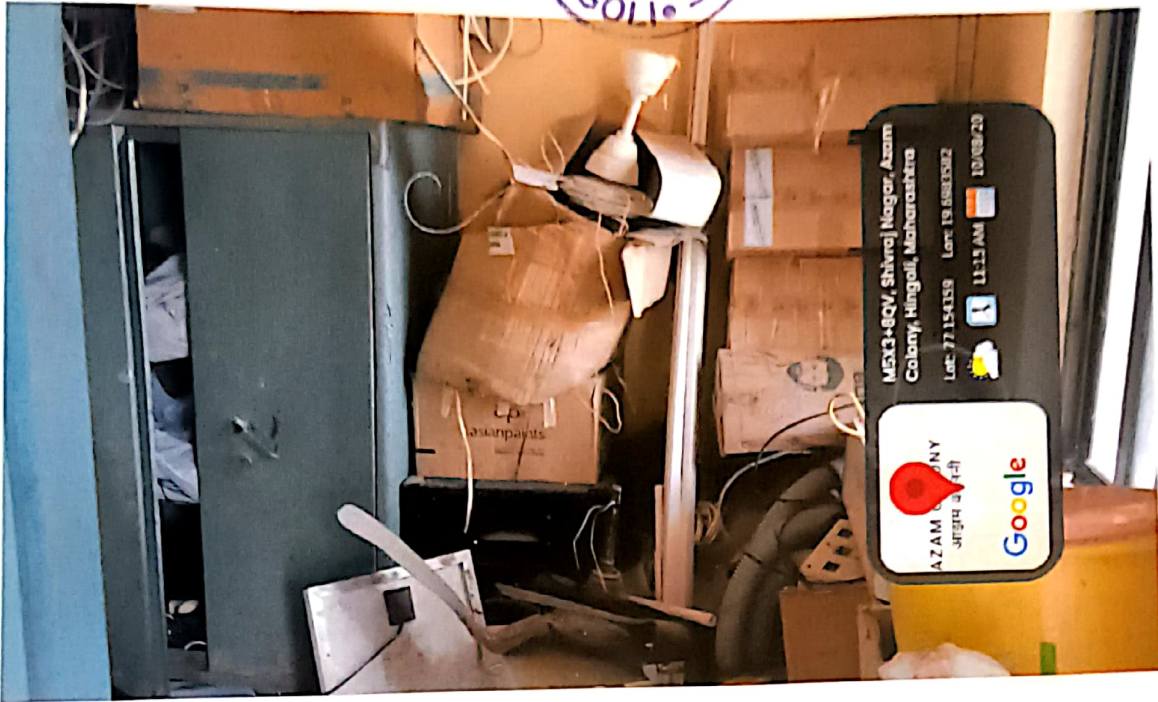
Monitoring and Reporting:

- **Regular Audits:** Conduct regular audits of e-waste management practices to assess compliance with this policy and identify areas for improvement.
- **Annual Reports:** Prepare annual reports on e-waste management activities, including quantities of e-waste collected, recycled, and disposed of, as well as the effectiveness of the policy.

Conclusion:

Shivaji College, Hingoli, is dedicated to maintaining an environmentally responsible approach to e-waste management. By implementing this policy, the college aims to effectively manage electronic waste, promote recycling, minimize waste generation, and enhance awareness about e-waste issues. Through consistent monitoring and reporting, the college will ensure that its e-waste management practices align with sustainability goals and contribute to a cleaner, healthier environment.


Principal
Shivaji College, Hingoli
Tq. Dist. Hingoli (MS)



E-WASTE MANAGEMENT



A handwritten signature in blue ink, appearing to be "P. S. S.", written over the printed name of the Principal.

Principal
Shivaji College, Hingoli
Tq. Dist. Hingoli (MS)